



# LuMIC Investment

Navigating the Future



Port of  
Antwerp  
Bruges  
International



01

# About us



# Who we are



Arising from the EU's Global Gateway initiative, **Port of Antwerp-Bruges International** and **Perbadanan Kemajuan Negeri Perak (PKNP)** formed a **strategic partnership** to develop the Port of Lumut into a **sustainable, innovative and competitive maritime and industrial hub** (LuMIC).



# Our team

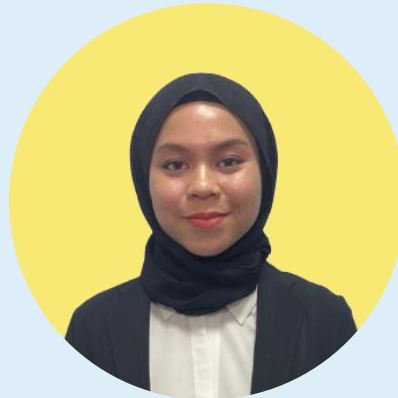
**Alex Staring**  
Chief Business  
Development Officer



**A'qilah Bahrin**  
Senior Executive



**Hivien Nashwa**  
Executive



**Nur Fakhira**  
Executive



**Aiman Arif**  
Executive



**Nurul Hidayah**  
Executive



02

# Beyond a green field



# Beyond a green field

## Existing operations

- Dry bulk
- Liquid bulk
- Breakbulk

## Existing industrial park

- 1.000 acres
- 885 acres industrial activities

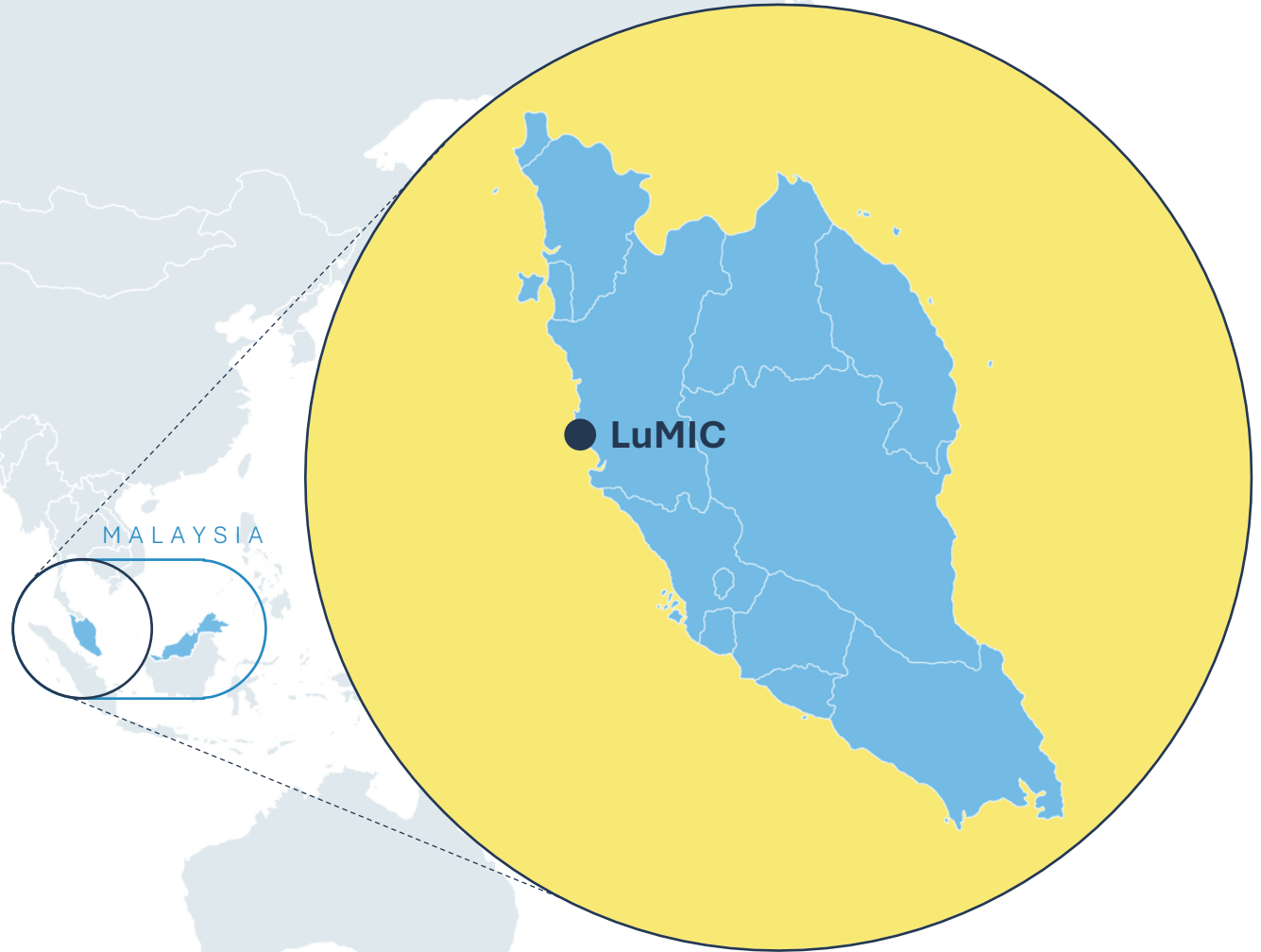
## Existing maritime services

- Mooring layup
- Ship-to-ship transfer
- Agency clearance
- Bunkering services
- Tug service

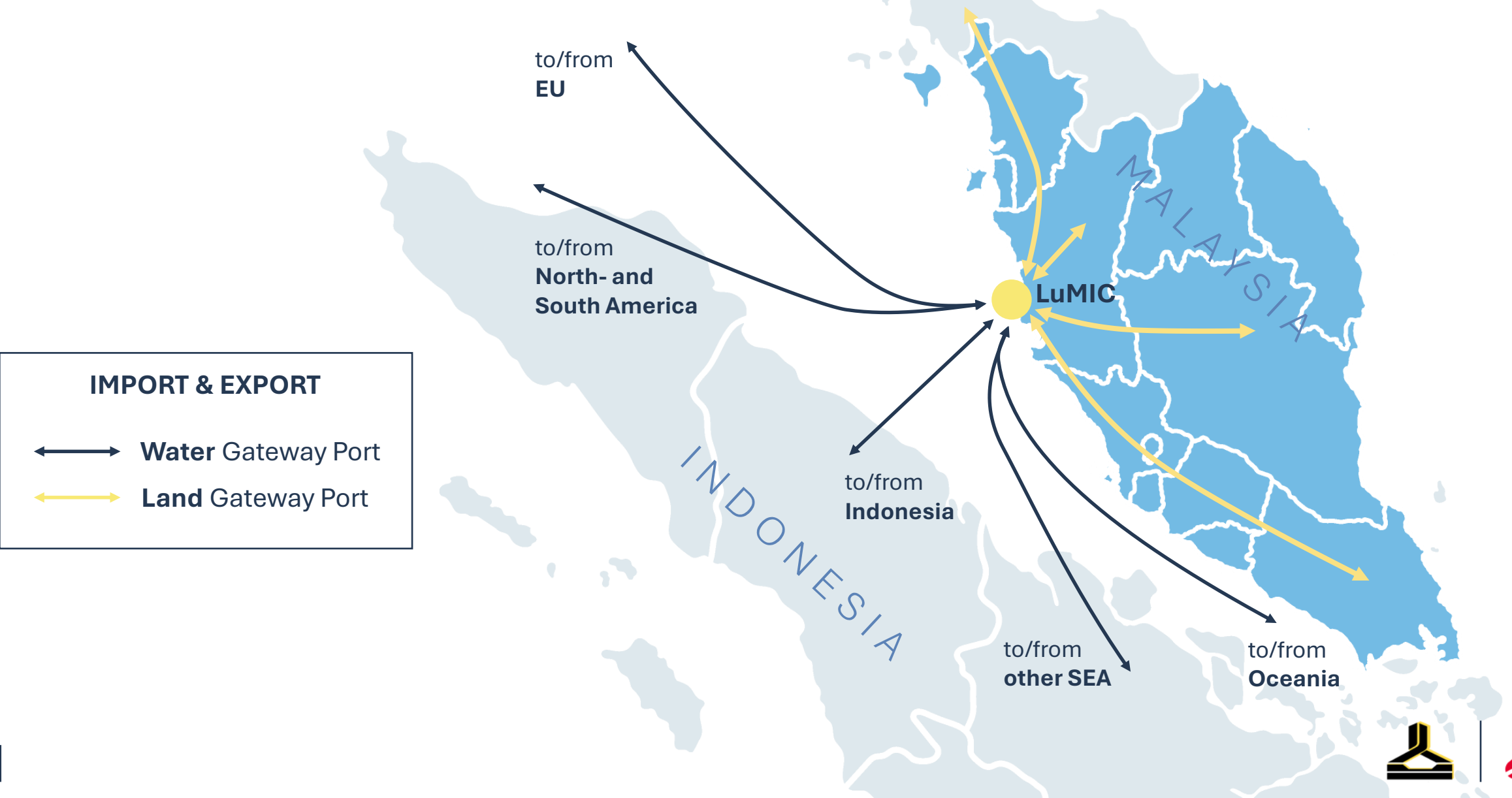


# Overview

**Located in Malaysia,  
in the heart of  
Southeast Asia, we  
are able to offer a  
strategic location as  
part of your supply  
chain, as well a  
gateway to the rest  
of the world.**

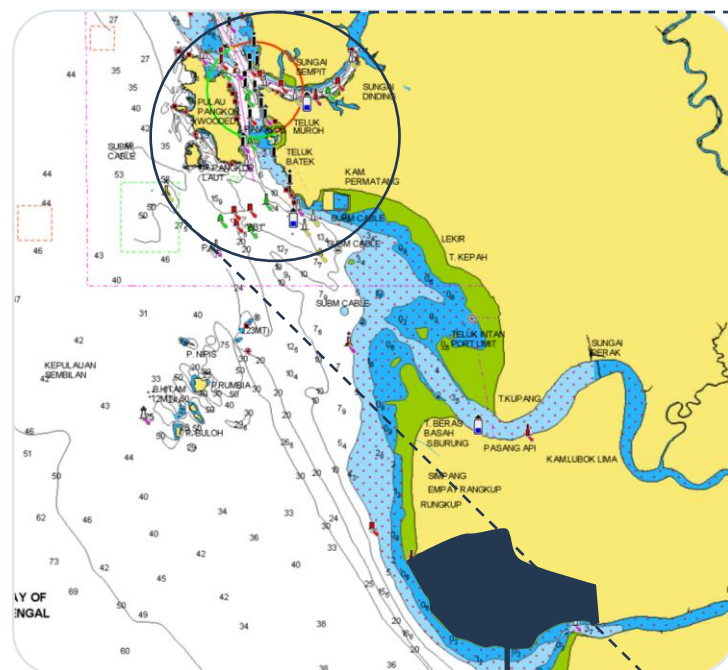


# Gateway to the world





## Nautical acces



## LuMIC 6



### LMT 3

## LMT 2

## LMT 1

**LBT**



# Expansion zones



## Proximity to major shipping routes:

Located at the entrance of the Strait of Malacca, one of the busiest maritime routes globally.





03

# Navigate your Future

Unlock the potential of LuMIC

**LuMIC**  
Lumut Maritime Industrial City



# Highlights



**Abundant land at competitive pricing**

**Fully supported by Federal and State government agencies**

**Green technology incentives**

**Tax incentives:** pioneer status, investment tax allowance, reinvestment allowance

**Skilled workforce**

**Connectivity with LNG pipelines, stable water and electricity supply**





**Thank  
you**



PERBADANAN KEMAJUAN NEGERI PERAK



**Port of  
Antwerp  
Bruges**  
International