

SWAZI CANDLES

... LET US LIGHT UP YOUR WORLD!!



Who We Are About Us



- Established in 1982, we are a manufacturing company based in the beautiful Kingdom of Swaziland in Southern Africa. Our core business is candle making both traditional paraffin wax as well as 100% organic soya candle tea lights. Our colorful, HANDMADE product range also features wax encased LED lights, pure vegetable glycerine soaps and Marula oil body balm.
- We have a vibrant, music filled workshop in the Malkerns Valley where we invite guests to come and interact with our artisans as they work their magic as well as a manufacturing workshop in the Matsapha industrial area where we produce the veneers for the candles and generate our bulk order products. We currently export to over 20 countries.

Our History

Where we started

- Swazi Candles was started in an old cowshed of a former dairy in 1982 by 2 South African art graduates. In those days The Kingdom of Swaziland was a haven of peace amidst troubled countries and proved to be an excellent place for setting up a Cottage Craft industry. The mountainous countryside was beautiful, the Swazi people were warm and friendly and proved to be ideal partners for our industry.
- The little workshop soon gained a reputation for producing unique candles and started attracting visitors. The vibrancy of the workshop, uniqueness of the product and the skill of the artisans resulted in Swazi Candles becoming one of Swaziland's premier tourist attractions. By the mid nineties the humble cowshed workshop had burgeoned into an industry that employed over 200 local people and exported candles all over the world



Our People

Teamwork makes the Dream work !

- Proud Member of Swaziland Fair Trade Organization
- We permanently employ 45 people. As a founding member of SWIFT (Swaziland Fair Trade Association) we are passionate about providing quality of life in the workplace for our employees. Our workers are part of the decision making process in our company and we are committed to sharing profits and paying a living wage to our people.
- Our employee benefit structures include Health Care, Pension Funds, Clothing Allowance, Food Allowance, Transport Allowance, Educational Loans, Funeral Insurance and access to the SWIFT Training Programs.



Our Social Responsibility Project – to plant a garden is to believe in tomorrow...
Bloomin' Beautiful!

We have an organic vegetable garden to help supply our workers with fresh, wholesome food. We believe that what you put in, is ultimately what you get out. By investing in the health and well being of our staff, we, in turn, get the best from them, thus enabling us all in a win-win situation.

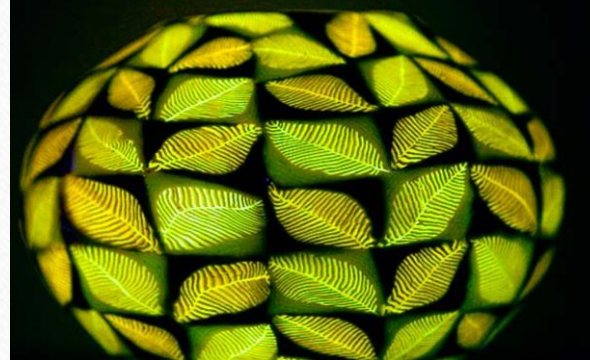
Our beautifully prolific garden also provides chilies for another local Fair Trade producer.

The Process

How we make it



Extensive Differentiated Range



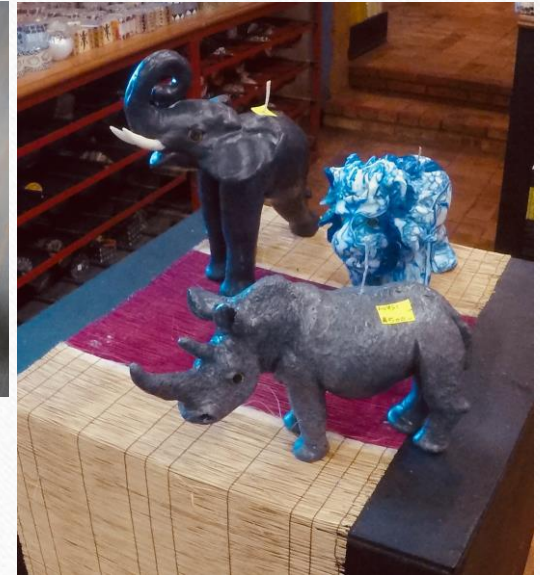
We make a wide range of candles in a variety of different geometric shapes and sizes as well as animal shapes and molded candles.



Our 100% Soya Tea Lights are organic and are sold both separately or with our wax cased tea light holders.

Small sample of our animal range

Our Rhino's contribute to STOP POACHING



Gift / Multi Packs



Corporate Logo's

Make your mark and bring some light!!



Our LED Glow Lamps glow for ± 100 hours on 2 AA batteries. Perfect for children's nightlights or creating that perfect ambience.



Contact Details

- info@swazicandles.co.sz wdfriedman@gmail.com (Orders)

Check us out on Facebook or on our website:

<https://www.swazicandles.com/>

- **Malkerns Shop** +268 25283219
- PO Box 172 Malkerns Valley,
M204, Eswatini (Swaziland) Africa
- **Matsapha Factory** +268 25184874