



Service | Excellence | Integrity | Quality | Safety

PROFILE

Ekwilog Technical Services

www.equiloggroup.com

C O N T E N T

- 01 **About us**
- 02 **Vision & Mission Statement**
- 03 **Products and Services**
- 04 **Scale of Operation**
- 05 **Training Services**
- 06 **Training and Graduation**
- 07 **Procurement and brokerage**
- 08 **Asset Management and Rantal**
- 09 **Partnership**
- 10 **Projects Executed**
- 11 **Contact**

Introduction

Ekwilog Technical Services (ETS) is a heavy machinery solution provider, established to provide services in the sale, leasing and handling of heavy machineries like; Crane, Excavator, Pay loader, Forklift, Truck etc. In addition, ETS provides professional certified training, skill development of the aforementioned machines and equipment handling technical services to businesses in the building and construction industry, real estate operation and oil and gas-related sector.

The company is an elite technical services and training organization with over five years' business experience in this strategic sectors of the Nigerian economy.

ETS is staffed with highly experienced and knowledgeable professionals with about 25 years work experience in engineering, equipment sale, leasing and maintenance and training.



Service | Excellence | Integrity | Quality | Safety

www.ekwilogroup.com

Also, ETS operates in partnership with HARDHAT Training Institute (USA), providers of industry leading technical skill training services in heavy machineries including Cranes, Forklifts, Excavators, Bulldozers, in construction, mining, oil & gas, Ports and production industries. ETS is also a member of IADC (International Association of Drilling Contractors) a global leader in advanced drilling industry. Our skill acquisition program deploys work-based learning (WBL) curriculum to equip trainee with the opportunity to link their talent, knowledge and skill in technical training with practical, on-the-job activities thereby imbibing essential work ethics and enhancing value.

ETS has ongoing business and related supports operations in Lagos and other major cities in Nigeria, and the company is currently in the process of expansion to more locations with a view to extending our services.

Our *Vision*

Our Vision is to be the one stop shop for heavy equipment related project. To be the leading value oriented, heavy machinery training institute with premium industry relevant skill acquisition program for productive workforce.



VISION



Service | Excellence | Integrity | Quality | Safety

Our *Mission*

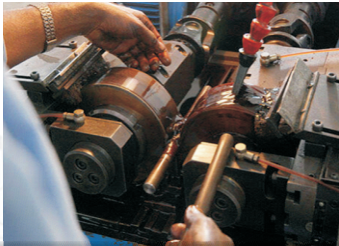
Our mission is to make it easy to do business anywhere round the clock in a secured environment online and offline.

We do this by giving suppliers the tools required to reach a wider audience searching for their products/services thereby helping buyers/users find equipment quickly and efficiently. To build and equip manpower for integrity capable of providing solution to workplace problems.



Service | Excellence | Integrity | Quality | Safety

www.equilogroup.com



OUR PRODUCT AND SERVICES

- Heavy Equipment Sale
- Procurement
- Heavy Equipment Rental (Direct rental, Brokerage and Contract)
- Training Services (Crane, Forklift, ReachStacker, Excavator, HSE and Bulldozer)
- Assets Management
- Machinery Maintenance
- Inspection
- Escrow

www.equilogroup.com

EQUILOG Service | Excellence | Integrity | Quality | Safety

Equipment Sale, Escrow Services:

At ETS, the scale of our services cover sale, lease, training and strategic capacity and these are more particularly described as follows:

Equipment Sale, Escrow Services: ETS is emerging as a reputable organization in area of sale of used and brand new earth moving equipment and machineries required in different sectors of the economy including real estate, construction industry, logistics and transport, mining, and oil and gas industry. ETS developed network of reliable commercial partners which positions the company as one of the few reliable and integrity-driven indigenous company in this sector. The sale and purchase of high value equipment is an important decision and getting the support you need through the process is critical to ensure your business continues to succeed. Equilog will supports all aspects of the transaction to ensure both buyer and seller are fully supported through our transparent, safe, secure and easy process. Whether you are purchasing an excavator, forklift, crane or selling a used piece of farm equipment, Equilog can help ensure that the terms agreed between buyer and seller are executed flawlessly.

TRAINING SERVICES

ETS training services touches many areas, from Crane to forklift, excavator and training follows occupation Safety and health guidelines.

One main method to ETS success is their focus on high quality training and hands-on experience. By expanding training scope and depth clients reap a motivated workforce thereby driving productivity with fewer down times and reducing risks chances of accident.ETS partners with HARDHAT Training Institute (USA) towards providing industry leading technical skill training services in heavy machinery (Crane,Forklift, Excavator, Bulldozer) handling and operation in construction, mining, oil & gas and production industries. Our skill acquisition program deploys work based learning (WBL) processes to equip trainee with the opportunity to link their passion and skill in technical training with practical, on the-job activities thereby imbibing work ethics and enhancing value.

Our Practical Section | Classroom Theory & Crane Trainees Graduation



Practical Training Session



Classroom Theory



Crane Trainees Graduation



Forklift Trainees Receiving Certificates

ETS believes in providing and amplifying options to ensure that employees and individuals are equipped with the skills they need so as to work as professionals at their jobs. One of the objectives of our training program is to impart usable skills through our training model where students receive theoretical and practical education on handling of machineries. As a testament to our proficiency, we have successfully trained and equipped over two thousand six hundred unemployed and eight hundred company personnel and on safe operation and proper equipment handling with industry relevant skills for value creation.

Procurement and Brokerage:

Another important aspect of our service line is the procurement and supply of equipment, machinery, instruments, tools, spares, materials etc. to the energy, manufacturing, power, service and allied sectors of the Nigerian economy. Be it locally or internationally, we source our products from reputable manufacturers or their appointed representatives. This has sustained our growing tradition of servicing every purchase order with very high quality and standard products, to the utmost satisfaction of our highly valued clients.



Service | Excellence | Integrity | Quality | Safety

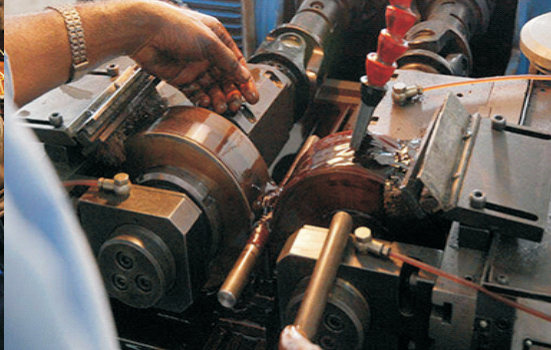
www.equilogroup.com

Highly valued Assets Management, Heavy Machinery Maintenance Services:

Equilog will proactively maintain your vehicles, equipment and heavy-duty machinery with maintenance work flows and service reminders. Immediately report issues to the right people. Fully understand the cost of operating and maintaining your mixed-fleet assets including maintenance, fuel, depreciation, expenses and more. Better estimate job costs and budgets. Asset management lays out your equipment in a simple and easy-to-understand format, meaning your business will fully understand the capabilities, life cycle, upgrade expectations, maintenance requirements and regulations that your various pieces equipment must meet.

Once you have all this laid out in your asset management, you will be in a great position to take proactive steps to ensure your equipment is always working to its optimum level and your business continues to meet its monthly and yearly goals.





Other benefits of asset management include:

- Better financial results and operating cost reduction
- Improved safety for your employees
- Decisions that are based on the entire lifecycle of your assets
- Proactive decisions as opposed to reactive
- Traceability of decisions.

www.equilogroup.com



Service | Excellence | Integrity | Quality | Safety



Reach Stacker



Excavator



Crane

Heavy Equipment Rental, Investment Services:

Whether you're expanding or growing your business capabilities or you have upcoming contracts that will require some machinery, acquiring heavy equipment will surely give your company the advantage it needs.

Heavy construction equipment rental business is growing nowadays. In the coming years the equipment rental market in Nigeria will greatly increase. One of the key trends that will gain traction in the global construction equipment rental market is the growing preference for a joint venture in equipment rental. Joint ventures among big construction equipment rental companies enable them to enhance their product portfolio and help them obtain cost optimality in large-scale projects. Lucrative machines to invest in include cranes, forklifts, excavators, pay loader, swamp buggy and bulldozer, reach stacker.



Partnership

We also recognize that success depends on delivering consistently, high quality products and service and we have been able to sustain this by leveraging reliable and efficient services with reliable partners.

Our Clientele

- Van Oord Marine
- Manal Machinery
- Vita Construction Services Ltd.
- Landmark Centre
- Polaris Africa
- Kilo Global
- GeoMud Nig.Ltd.
- Sterling Oil

Project Executed



S/N	CLIENTS	PROJECT	STATUS
1	GeoMud Nig.	Provision of 1 Unit of Lowbed Trailer to Transport B/D 40 ft Crane From Obokofia Egbema community near Aggu Flow station TO Mudplant Kwale Delta State.	Completed
2	Land Mark Center	Provision of 1 Unit of 4 x 4 Mobile Crane to Lift 4 units of 20 feet and 3 units 40 feet Containers at landmark Event Centre.	Completed
3	Kilo Global	Training for their employees on BackHoe, Forklift and Excavator Machines.	Completed

4

Sterling Oil

Provision of 2 units of **Completed** bo
at OML 13, IKO Town Akwa Ibom St

5

NMR
Intercontinental Ltd.

Provision of 2 Units of **Completed** T
transp for 161 ft of nsa can &
Batt e2rtic nsa chr o Cro stan
Lagos State to Ijebu Ode in Ogun

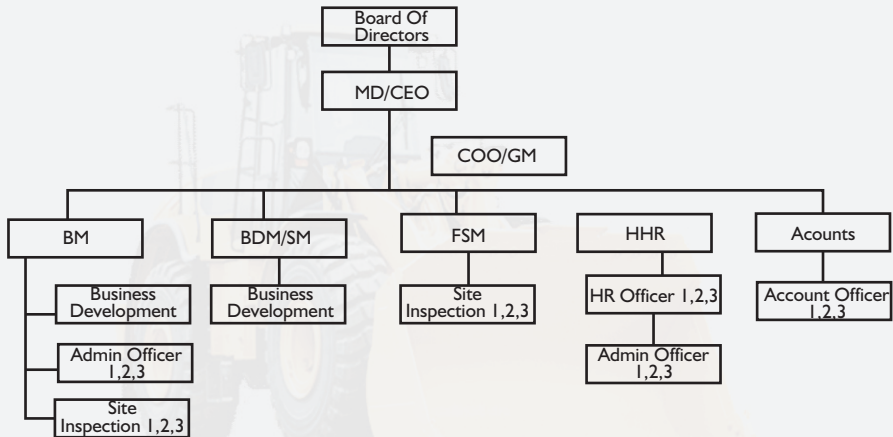
6

Pennek Nigeria

Brokered sale of a Bulldozer Machine

Completed

OUR COMPANY ORGANOGRAM





CONTACT:

HEAD OFFICE:

4th floor, Royal Office Building, KM 25
Lekki-Epe Expressway, Opposite
Fidelity Bank, Ajiwe, Ajah.

PORT HARCOURT BRANCH:

Plot F3, Deborah Lawson House,
Sanni Abacha Road GRA Port Harcourt,
Rivers State

☎ + 2 3 4 8 0 9 2 9 0 8 6 8 6
+234 9091746789

✉ info@equilog.com.ng

🌐 www.equilogroup.com



THANK YOU

www.equilogroup.com